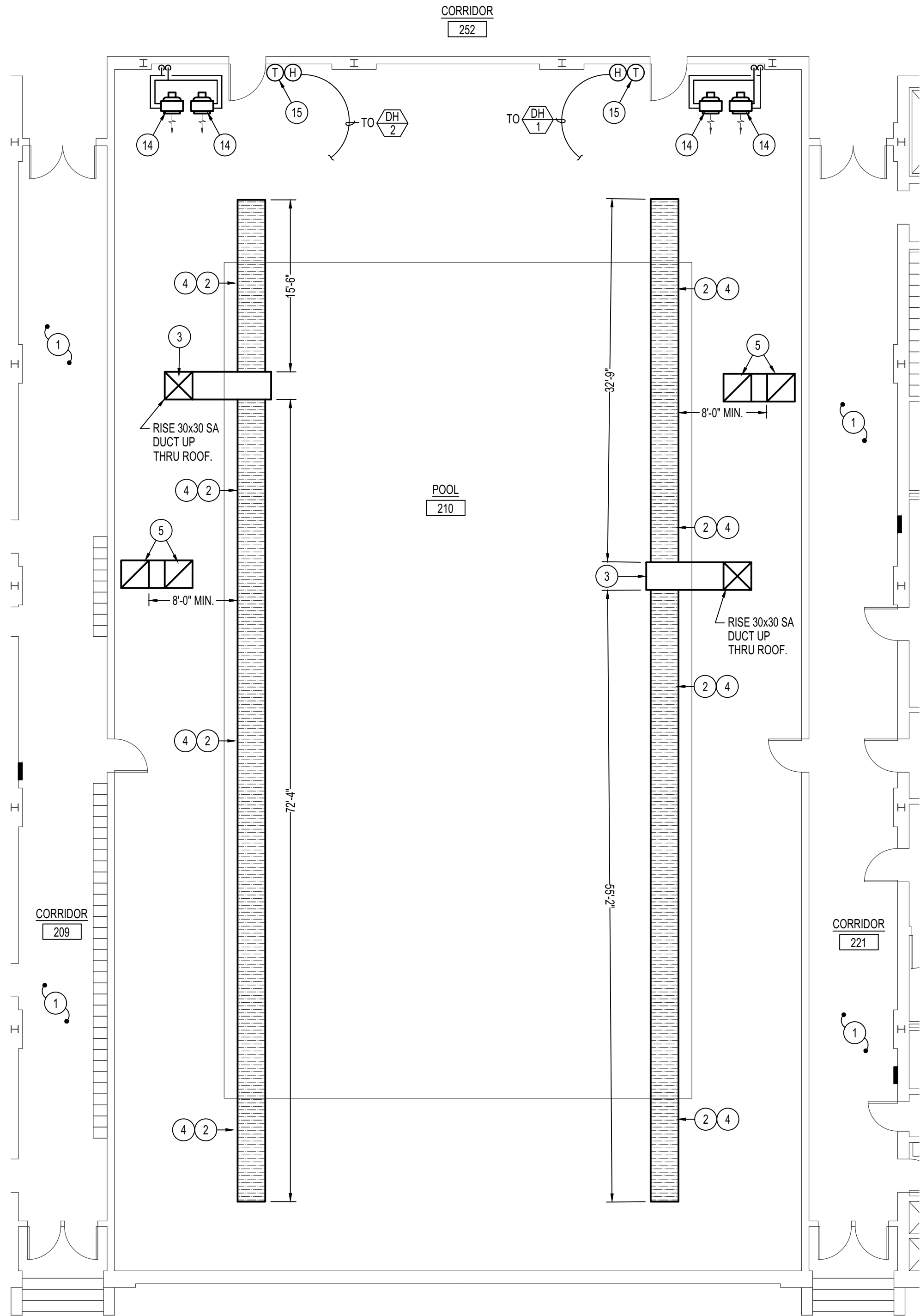
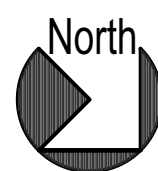


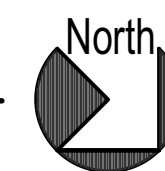
UPPER POOL AREA MECHANICAL PLAN

SCALE: 1/8" = 1'-0"



POOL AREA MECHANICAL PLAN

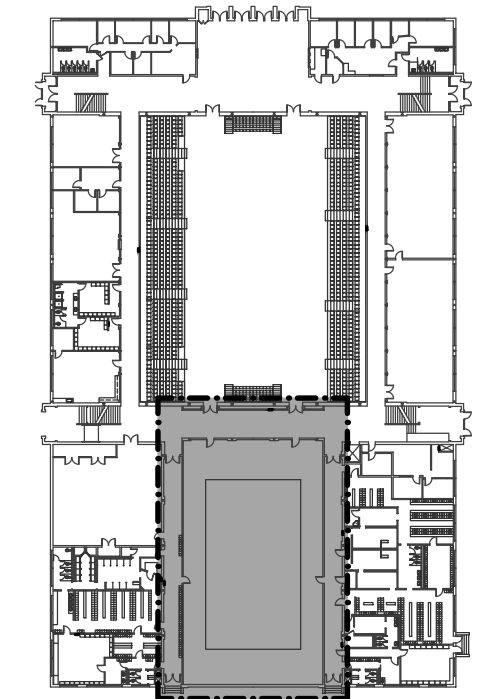
SCALE: 1/8" = 1'-0"



PLAN NOTES:

- 1 NO WORK REQUIRED IN CORRIDORS OR IN LOCKER ROOMS.
- 2 DISCONNECT & REMOVE EXISTING DUCTWORK ABOVE POOL AND THRU ROOF. REMOVE ALL EXISTING DUCT HANGERS & GRILLES.
- 3 PROVIDE NEW 30x30 RIGID ALUMINUM SUPPLY AIR DUCT THRU ROOF FROM NEW ROOF MOUNTED EQUIPMENT. DROP RIGID ALUMINUM DUCT DOWN TO 48" BELOW ROOF AND CAP BOTTOM.
- 4 PROVIDE AND INSTALL NEW 30"Ø FABRIC DUCT SIMILAR TO 'DUCT SOX' WITH INTERNAL HOOP SUPPORT SYSTEM SPACED AT 5'-0" ON CENTERS. PLACE LINEAR VENTS IN DUCT TO ACHIEVE 8000 TOTAL CFM WITH A MAXIMUM VELOCITY OF 300 FPM THRU ANY SINGLE VENT. RUN NEW FABRIC DUCT ABOVE BOTTOM ROOF TRUSS CHORD. FIELD VERIFY EXISTING CONDITIONS. COLOR SELECTED BY OWNER.
- 5 PROVIDE NEW 30x30 RIGID ALUMINUM RETURN AIR DUCT THRU ROOF FROM ROOF EQUIPMENT. DROP RIGID ALUM. DUCT DOWN TO 24" BELOW ROOF AT FARTHEST POINT AWAY FROM UNIT. CAP END OF DUCT AND LEAVE 30x30 OPENING IN TOP OF DUCT.
- 6 DISCONNECT AND REMOVE EXISTING ROOF MOUNTED MAKE-UP AIR UNIT AND EXISTING DUCTWORK. EXISTING IRON SUPPORT ABOVE ROOF TO REMAIN.
- 7 EXISTING IRON SUPPORT FRAME ABOVE ROOF TO REMAIN. REMOVE EXISTING UNIT AND INSTALL NEW UNIT ON EXISTING FRAME. REFER TO STRUCTURAL DRAWINGS FOR ANY CHANGES TO EXISTING SUPPORT. CENTER UNIT ON EXISTING SUPPORT.
- 8 PROVIDE AND INSTALL NEW DEHUMIDIFIER / MAKE-UP AIR UNIT AS SPECIFIED ON EXISTING IRON SUPPORT FRAME. DROP NEW 30x30 RIGID ALUMINUM DUCTWORK DOWN THRU ROOF AND CONNECT TO NEW FABRIC DUCT IN POOL AREA. (SEE NOTE 4)
- 9 TRANSITION 54x13 SUPPLY AND RETURN OUTLETS FROM UNIT TO 30x30 AND DROP DOWN THRU EXISTING ROOF. COORDINATE NEW ROOF PENETRATIONS WITH EXISTING BUILDING STRUCTURE. DUCTWORK TO BE UNLINED ALUMINUM CONSTRUCTION. ALL DUCTWORK ABOVE ROOF TO BE WRAPPED WITH 2" EXTERNAL DUCT WRAP AND THEN COVERED WITH PRE-FINISHED ALUMINUM DUCT COVER. REFER TO DETAIL AM301 FOR TYPICAL INSTALLATION OF EXPOSED DUCTWORK.
- 10 DISCONNECT AND REMOVE EXHAUST FAN ON ROOF. CAP EXISTING ROOF CURB WITH SHEET METAL AND SEAL WATER TIGHT.
- 11 DISCONNECT AND REMOVE EXISTING DEHUMIDIFIER. ALL ASSOCIATED DUCTWORK, GRILLES AND PIPING. CAP ANY EXISTING PIPING STILL IN USE. REFER TO ARCHITECTURAL DRAWINGS FOR PATCHING OF EXISTING WALLS.
- 12 EXISTING GAS LINE ON ROOF TO REMAIN.
- 13 DISCONNECT EXISTING 1-1/2" GAS LINE FROM EXISTING UNIT. EXISTING PRESSURE REGULATOR TO REMAIN. EXISTING EXISTING 1-1/2" GAS LINE AS REQUIRED TO CONNECT TO NEW EQUIPMENT. PROVIDE NEW SHUT-OFF VALVE AND FLEXIBLE HOSE AT NEW CONNECTION. REFER TO DETAIL OM301 FOR TYPICAL GAS LINE CONNECTION.
- 14 EXISTING STEAM UNIT HEATERS AND ALL ASSOCIATED STEAM PIPING TO REMAIN. PROTECT DURING CONSTRUCTION.
- 15 EXISTING PNEUMATIC THERMOSTAT TO REMAIN. MAINTAIN CONNECTION TO UNIT HEATERS. REPLACE EXISTING HUMIDISTAT ON WALL WITH NEW HUMIDIFIER CONTROL AND CONNECT TO CORRESPONDING EQUIPMENT ON ROOF.

KEY PLAN:



ORIGINAL DRAWING SIGNED BY: DWAYNE C. SUDWEEKS
 DATE ORIGINAL SIGNED: Feb 16, 2021
 ORIGINAL ON FILE AT ENGINEERED SYSTEMS ASSOCIATES
 1355 EAST CENTER, POCATELLO, IDAHO 83201



Engineered Systems Associates
 1355 EAST CENTER
 POCATELLO, IDAHO 83201
 PHONE: (208) 233-0501
 FAX: (208) 233-0529
 EMAIL: eso@engsystems.com
 ESA JOB NUMBER: 18050

CONTRACTOR SHALL VERIFY ALL DIMENSIONS & CONDITIONS SHOWN OR IMPLIED

DRAWING SCALE APPLIES TO 22" X 34" SHEET SIZE

REVISION DATE

DRAWN BY: M. JENSEN

CHECKED BY: D. SUDWEEKS

JOB NUMBER: 18461

PROJECT DATE: FEBRUARY 2021

SHEET OF

M104 12

Myers ■ Anderson

Architecture
 Interior Design

Landscape Architecture

122 South Main Street ■ Pocatello, Idaho 83204 ■ Tel. (208) 232-3747 ■ Fax (208) 232-3782
 927 Main Street, Suite 300 ■ Evanston, Wyoming 82930 ■ Tel. (307) 789-0934

PROJECT:
REED GYM HVAC UPGRADE
IDAHO STATE UNIVERSITY
DPW # 19227

POCATELLO, IDAHO

SHEET TITLE:

POOL AREA
 MECHANICAL
 PLANS



This approval shall not be construed to be an approval of any violation of, or variance from, Idaho's adopted codes, standards, laws or rules applicable to this project.
 SEPARATE BUILDING PERMIT REQUIRED FOR CONSTRUCTION